

Technical Guide
22nd Asian Mountain Bike Championships
&
8th Asian Junior Mountain Bike Championships
Chai Nat Province –Thailand
4th – 8th May 2016

1: Organization

The 21st Asian Mountain Bike Championships and the 7th Asian Junior Mountain Bike Championships is organized by

Thai Cycling Association
286 Velodrome, Huamark,
Ramkhamhaeng Road, Bangkok,
Bangkok 10240, Thailand
Tel: +66-2-719-3340 til 42
Fax: +66-2-719-3343
Email: taca1959@yahoo.com
Website: <http://www.thaicycling.or.th>

The Championships will be held from May 4th – 8th, 2016 under the Regulations of Union Cycliste Internationale (UCI) and the Specific Regulations of the Championships mentioned hereunder.

2: Type of Event

The event is entered on the UCI's MTB Calendar open for the riders of the Elite Men, Elite Women, Junior Men and Junior Women Categories. The event is registered as a Continental Championships thus in conformity with the UCI's Rules, points are awarded for the UCI's ranking under the Elite Continental Championships.

3: Participation

The event is for riders of the Federations affiliated to The Asian Cycling Confederation (ACC) and the championships comprises with the events and categories as below

1. Downhill (DHI)

- Men's Elite (Age 19 years old or older)
- Women's Elite (Age 19 years old or older)
- Men's Junior (Age 17-18 Years old)
- Women's Junior (Age 17-18 Years old)

Each Federation can send the maximum 4 riders for DHI Men's and Women's Category.

Remark : As per the UCI's Regulations:

Article 4.1.006 "Except for the world championships, downhill events are open to all riders aged 17 or over.

At the world championships, separate junior events are organized for men and women juniors (aged 17 and 18). At the world cup events, a separate junior event is organized for men."

The junior riders shall compete together with Elite riders and have eligible to get the result of Elite's category, on the mean time they shall have a chance to get a result as Junior category separately.

2. Cross Country Olympic (XCO)

- Men's Elite (Age 19 years old or older)
- Women's Elite (Age 19 years old or older)
- Men's Junior (Age 17-18 years old)
- Women's Junior (Age 17-18 Years old)

Each Federation can send the maximum 4 riders for XCO Men's Elite / Women's Elite 2 Men's Junior and Women's Junior Category.

3. Cross Country Team Relay (XCR)

Each federation can send only one team which will be comprised of 4 riders and "MUST INCLUDE AT LEAST 1x WOMEN and 1x JUNIOR"

4. Cross Country Eliminator (XCE)

- Men's
- Women's

Each Federation can send the maximum 4 riders for XCE Men's and Women's Category.

Preliminary entry form should be submitted no later than March 30th 2016.

Delegations composition and all Entry form should be submitted no later than April 15th 2016.

4: Transportation

The nearest airport to Chai Nat Province is Suvarnabhumi International Airport, Bangkok (approximate 100 km to Chai Nat). On arrival and departure day of the participants, the organizer will arrange transportation between airport and the official hotel(s) in Chai Nat Province.

During the Championships period, the organizer will arrange the shuttle buses travel from the official hotel to the championships' venue and from the Championships venue to the official hotel.

Therefore, the organizer will be responsible for transportation upon arrival and departure only 1 time per team. Beside that mentioned, team(s) may be charged extra transportation expense.

5: Accommodation

The organizer will arrange accommodation to all participants on the conditions as follow

- Three star hotel (twin beds) – US\$ 80 per day per person.
- Full board inclusive of 3 meals per day.
- In case of the team official and/or rider require single room the expenses should be US\$ 90 per day per person and the people concerned MUST notify to the organizer at least 10 days before the arrival.
- Payment MUST be made in US Dollars cash only.

Remarks : all participants (riders / team officials) have to pay US\$ 80 per day per person even he or she not stay in the official hotel as it is the management and/or registration fee for the Championships.

6: Championships Venue

The Cross Country is located at Khayai Mountain and the Downhill races venue is located at Plong Mountain, approximately 10 minutes by car from the official hotel and/or the Chai Nat's down town area.

The distance between The Cross Country and The Downhill venues are 2 km.

7: Championship's Secretariat

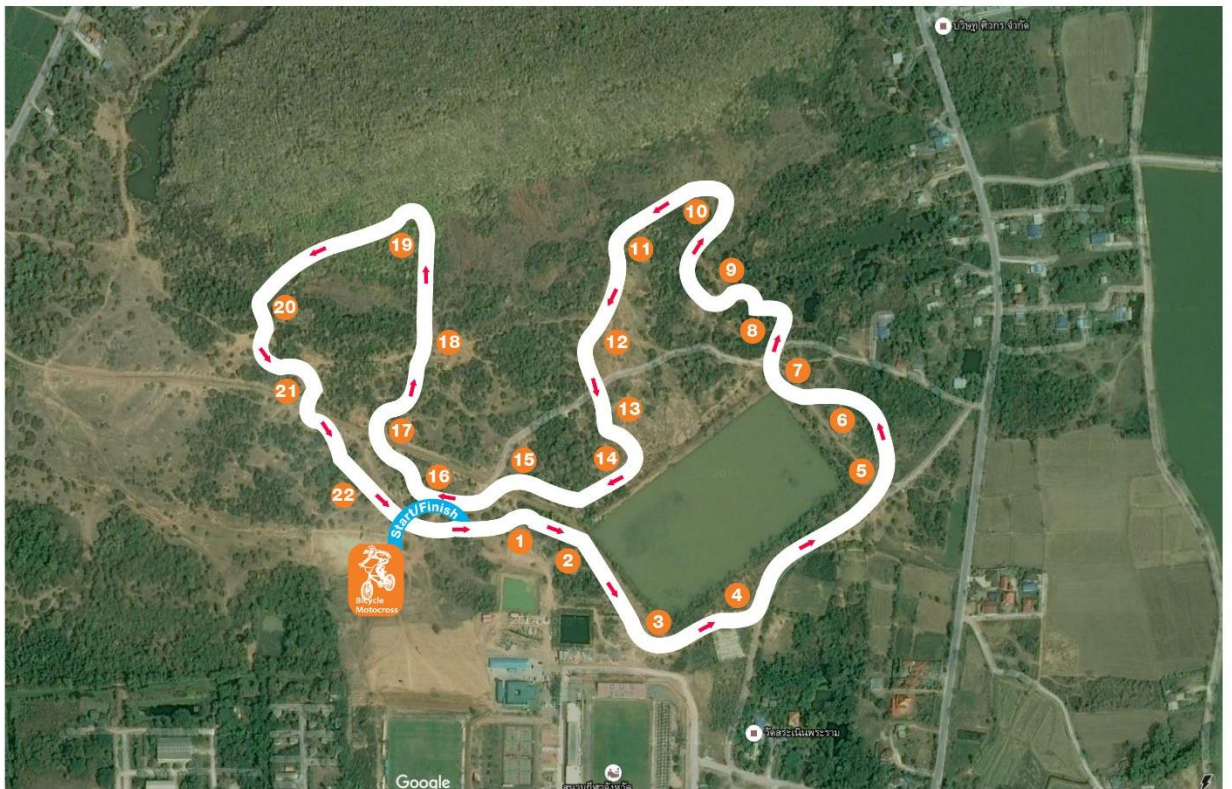
Thai Cycling Association's office
Thai Cycling Association
286 Velodrome, Huamark,
Ramkhamhaeng Road, Bangkok,
Bangkok 10240, Thailand
Tel: +66-2-719-3340 til 42
Fax: +66-2-719-3343

8: Hospital

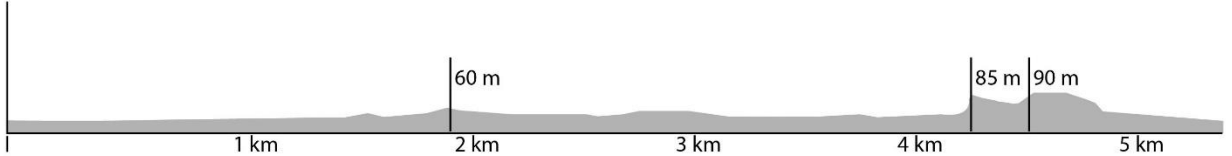
- Chai Nat Hospital
- Chai Nat Narendorn Hospital

Courses Map

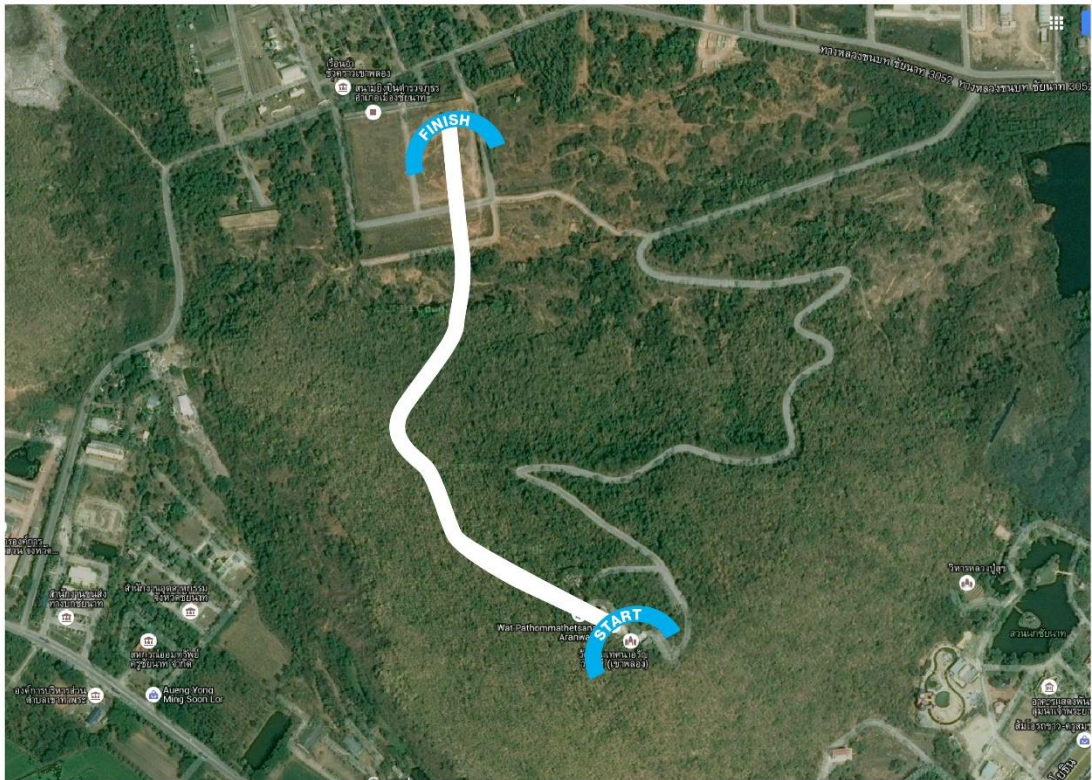
Cross Country



Distance



Downhill



Contact Information

Union Cycliste Internationale, UCI

Ch. de la Mêlée 12
1860 Aigle
Switzerland
Tel. +41 24 468 58 11
Fax +41 24 468 58 12

Asian Cycling Confederation

PEACE Building, B-5F, #289-12, 2Ka Sungsoo-Dong, Sungdong-Ku,
Seoul, KOREA /
Tel: +82-2-467-1313 Fax : +82-2-467-1323
Copyright(c) Asian Cycling Confederation. All rights reserved.
E-mail:accycling@yahoo.co.kr

Thai Cycling Association

286 Velodrome, Huamark,
Ramkhamhaeng Road, Bangkok, Bangkok,
Bangkok 10240, Thailand
Tel: +66-2-719-3340 til 42
Fax: +66-2-719-3343
Email: taca1959@yahoo.com
Website: <http://www.thaicycling.or.th>

Race Director

Mr. Nuthapong Lohitnavy
286 Velodrome, Huamark,
Ramkhamhaeng Road, Bangkok, Bangkok,
Bangkok 10240, Thailand
Tel: +66-2-719-3340 til 42
Fax: +66-2-719-3343
Mobile:
Email: taca1959@yahoo.com
